

Sustainable Competitiveness

Sustainable competitiveness is the ability to generate and sustain inclusive wealth without diminishing the future capability of sustaining or increasing current wealth levels.

Country Stats



		Global average
Population (million)	51.6	35.9
Land area (km <sup>2</sup> )	100,339	634,012
GNI/capita (U\$/p)	30,600	15,317
GNI total (bl U\$)	2,070	685

Sustainability Score

Score **50.86**

% of best 83.6%

Global Rank **28**

Rating

Conventional credit rating AA

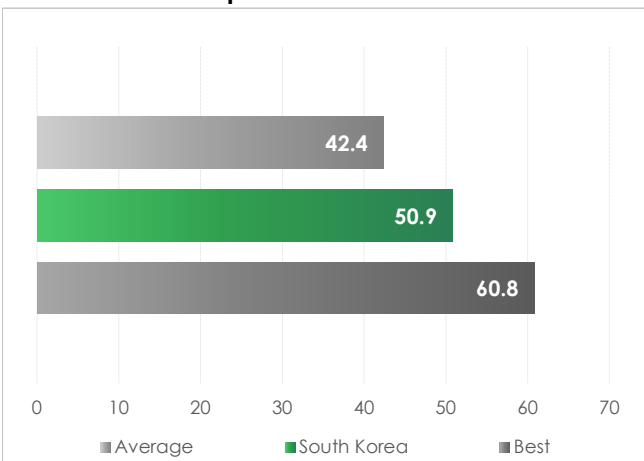
Sustainability-adjusted rating AA

Competitiveness Trend

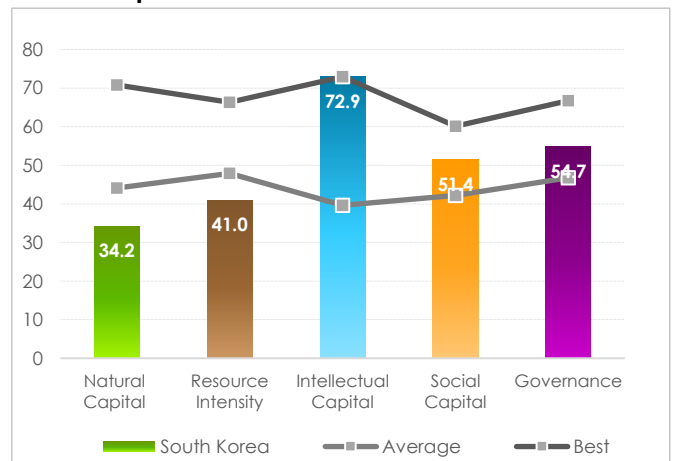
Positive trends 61.6%

Negative trends 26.3%

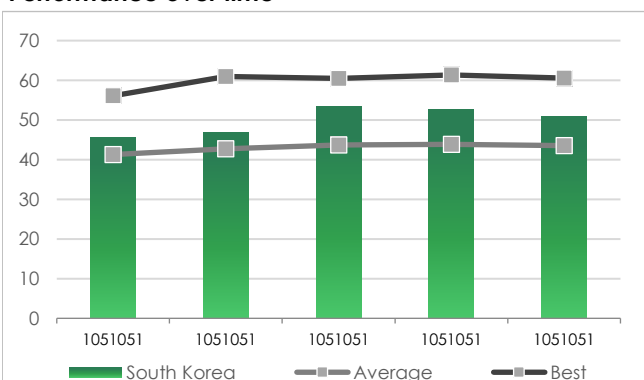
Sustainable Competitiveness



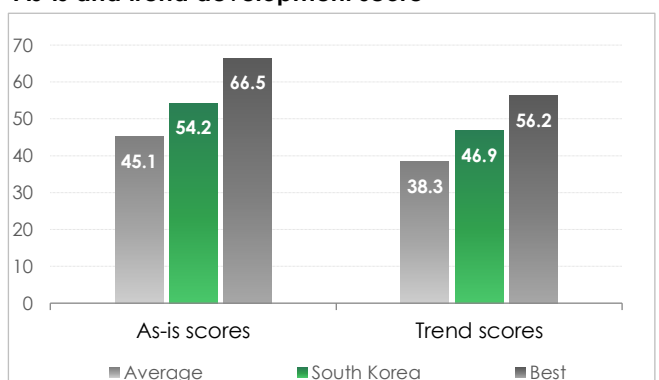
Criteria performance



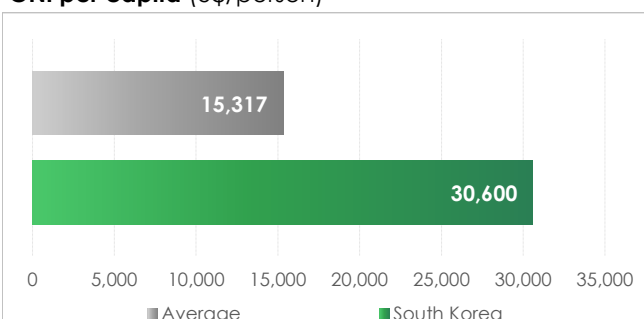
Performance over time



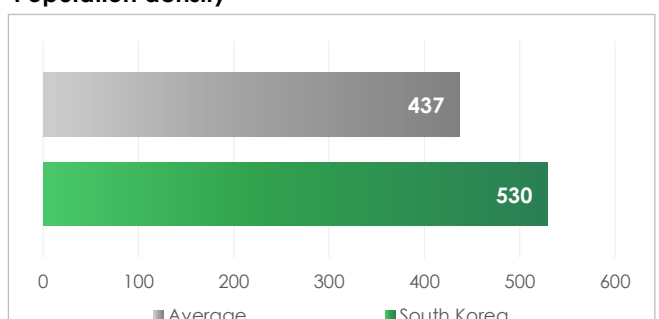
As-is and trend development score



GNI per capita (U\$/person)



Population density

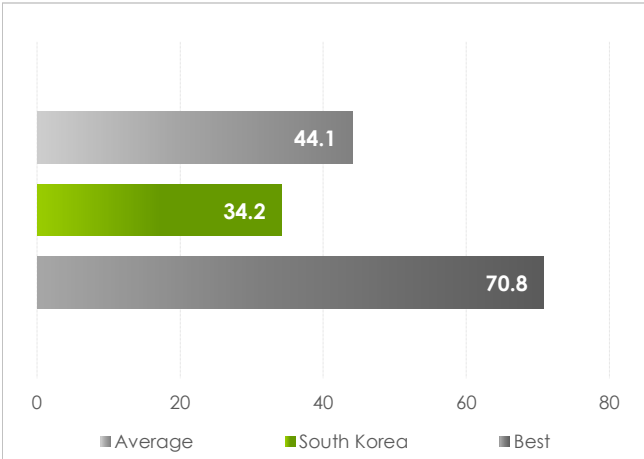


Natural Capital

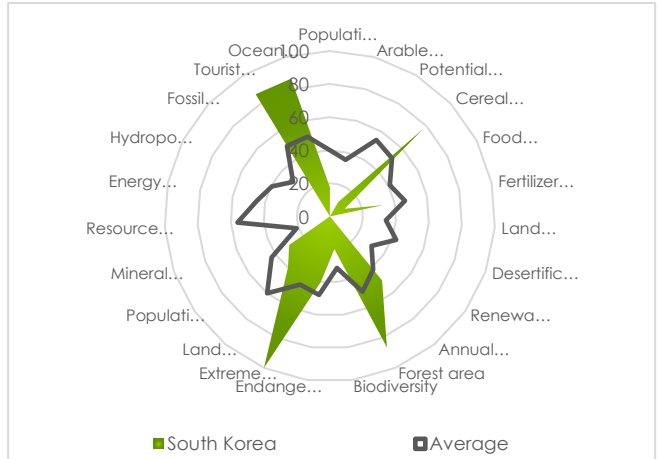
Natural Capital of a country is the given natural environment, including the availability of resources, and the level of the depletion of those resources.

<b>Score</b>	<b>34.2</b>	Positive trends	38.5%
<b>Rank</b>	<b>154</b>	Negative trends	46.2%

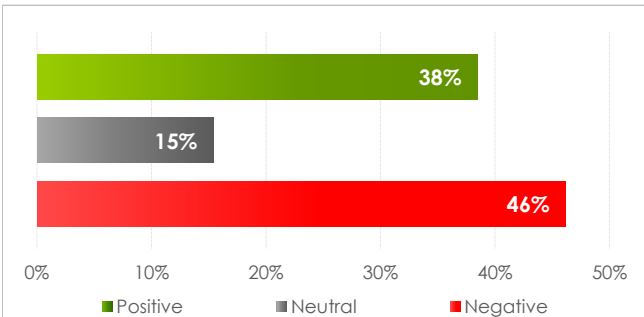
Natural Capital Score



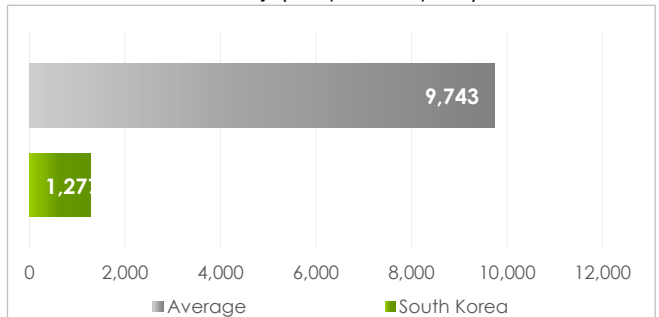
Indicator performance



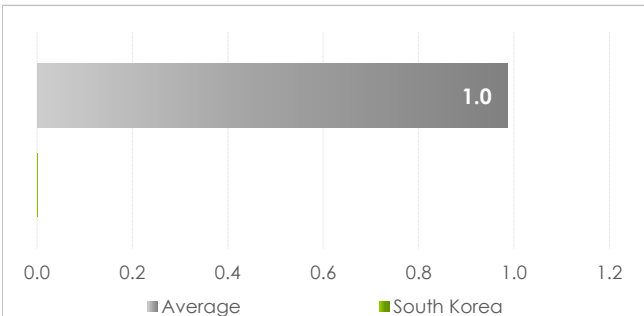
Indicator trends



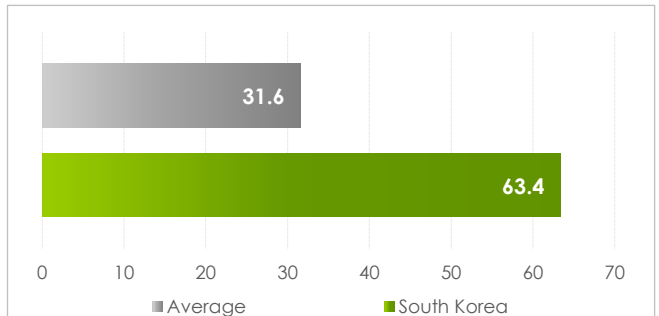
Freshwater availability (m<sup>3</sup>/person/year)



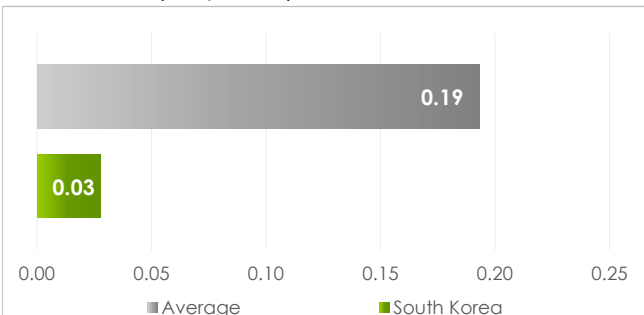
Population exposed to climate extremes (%)



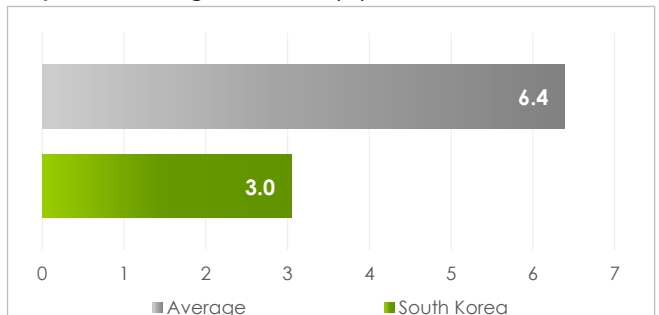
Forest area (%)



Arable Land (ha/person)



Population living below 5m (%)

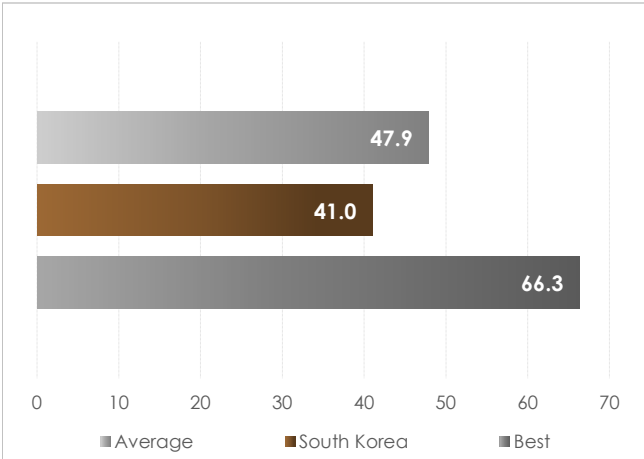


Resource Intensity

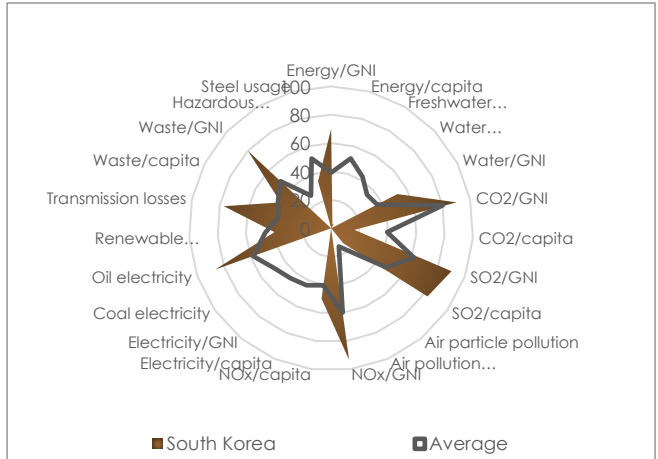
the efficiency of using available resources as a measurement of operational competitiveness in a resource-constraint World.

<b>Score</b>	<b>41.0</b>	Positive trends	63.6%
<b>Rank</b>	<b>158</b>	Negative trends	27.3%

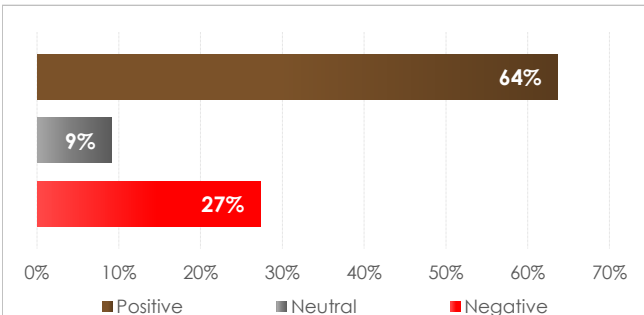
Resource Intensity Score



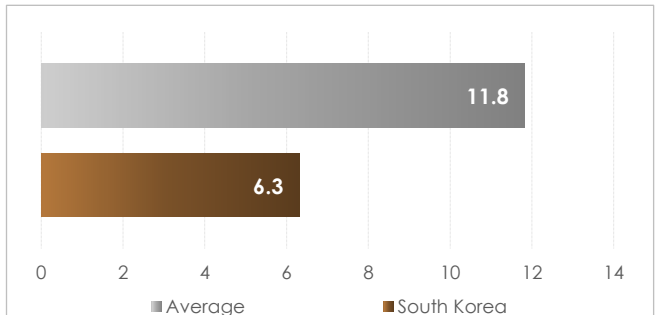
Indicator performance



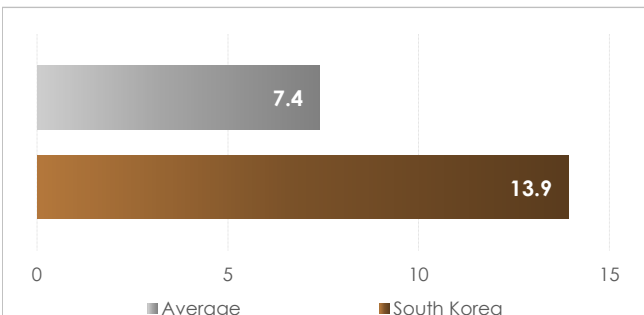
Indicator trends



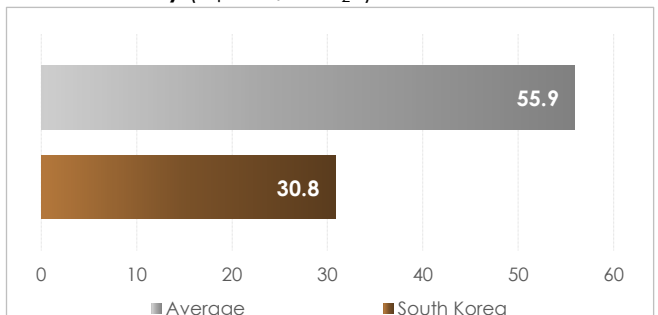
Energy intensity (U\$ GNI/energy unit)



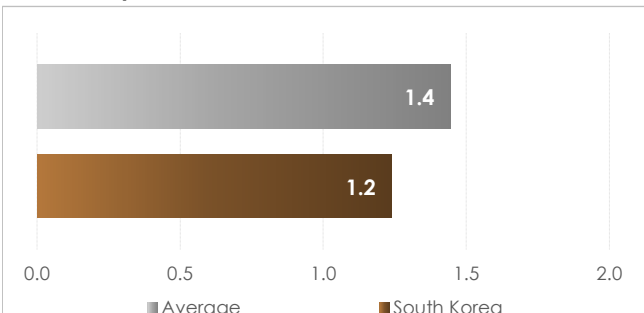
CO<sub>2</sub> emissions/capita



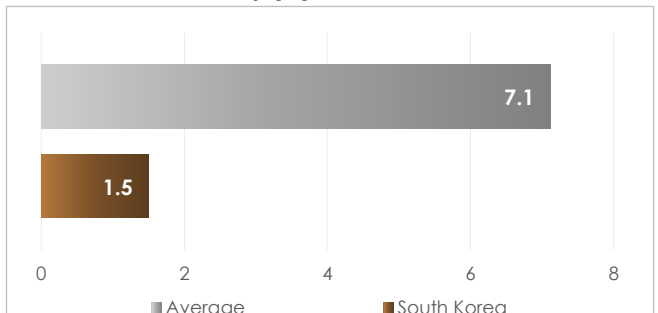
Water intensity (U\$ GNI/m<sup>3</sup> H<sub>2</sub>O)



Waste/capita



Renewable electricity (%)

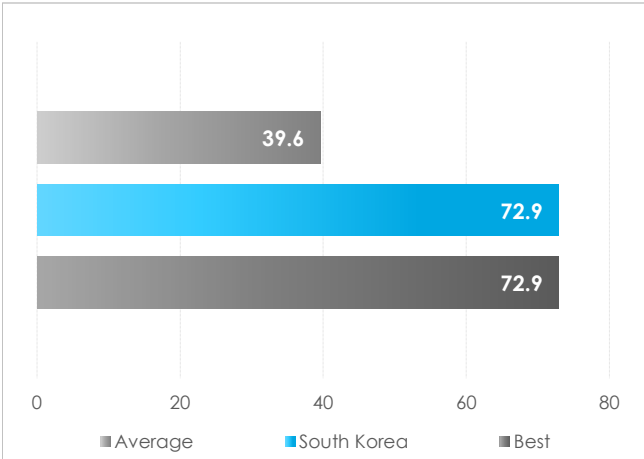


Intellectual Capital

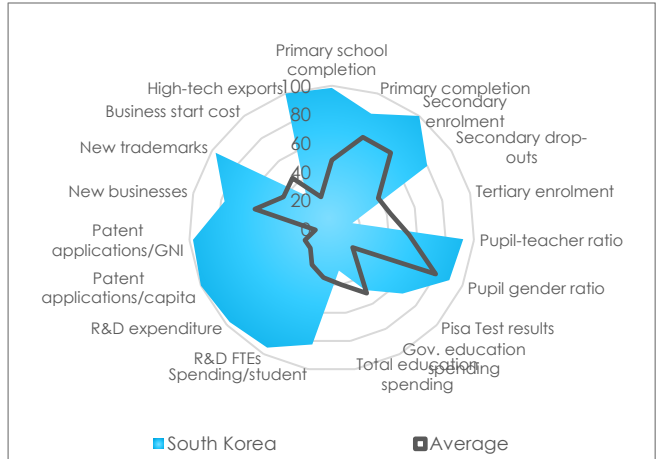
Intellectual capital is the capability to generate wealth and jobs through innovation and value-added industries in the globalised markets

Score	72.9	Positive trends	89.5%
Rank	1	Negative trends	10.5%

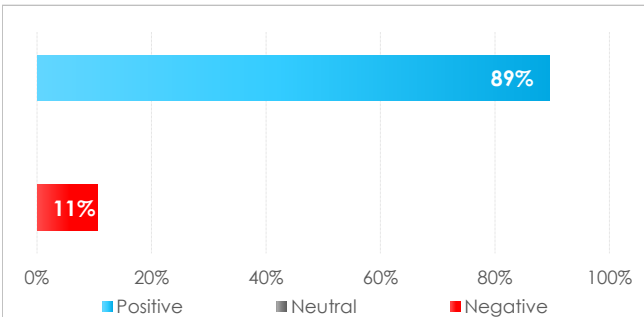
Intellectual Capital Score



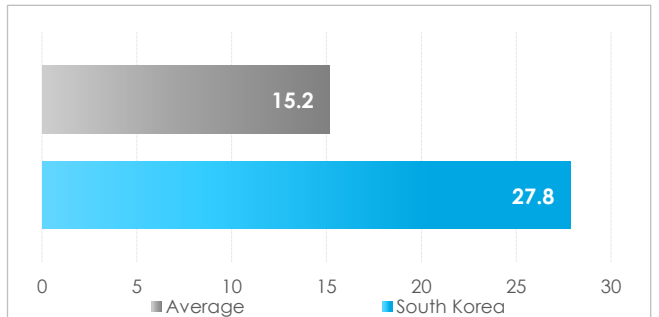
Indicator performance



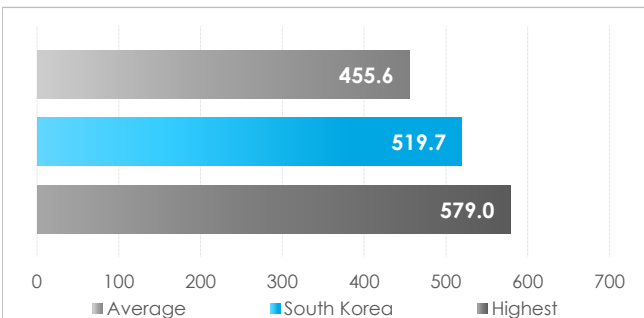
Indicator trends



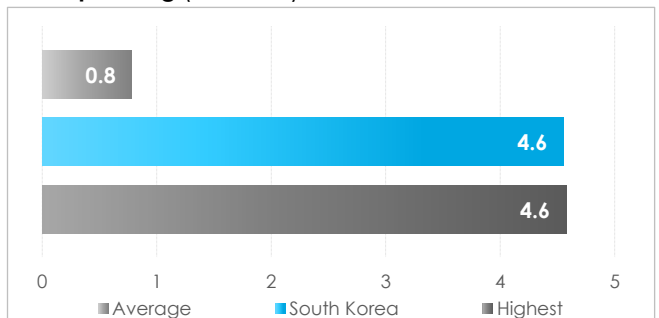
Spending on education (% of gov. spending)



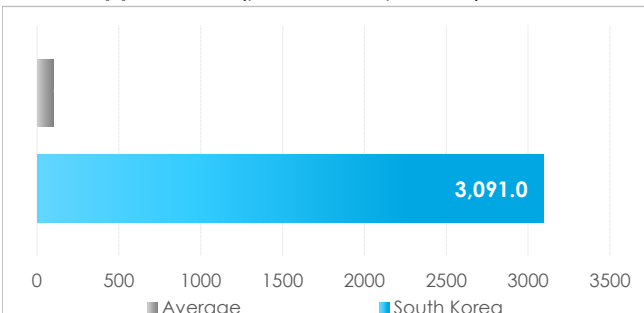
PISA test results



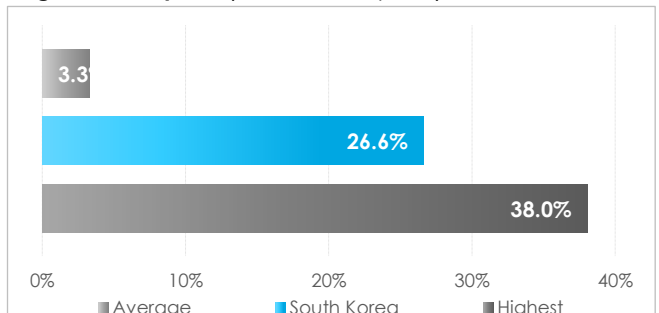
R&D spending (% of GNI)



Patent applications (per 100'000 persons)



High-tech exports (% of total exports)



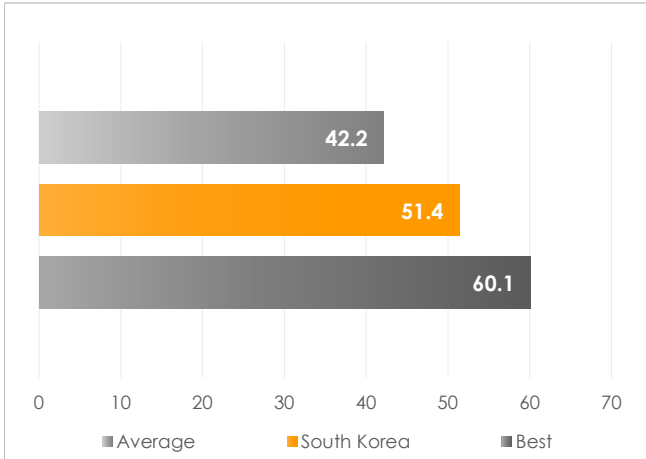


Social Capital

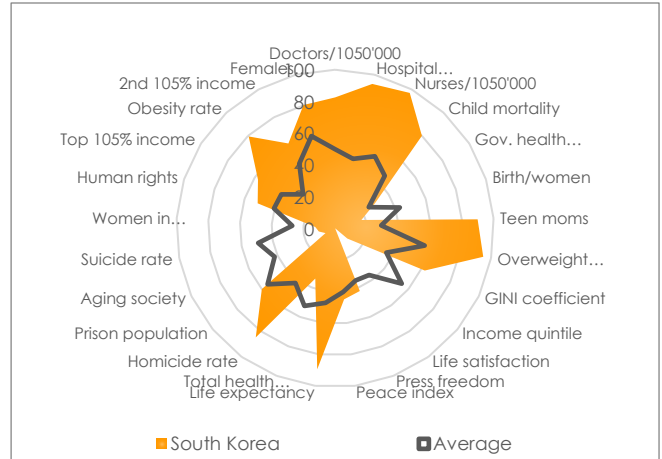
The social capital defines quality of health, security, freedom, equality and life satisfaction within a country.

<b>Score</b>	<b>51.4</b>	Positive trends	50.0%
<b>Rank</b>	<b>25</b>	Negative trends	27.3%

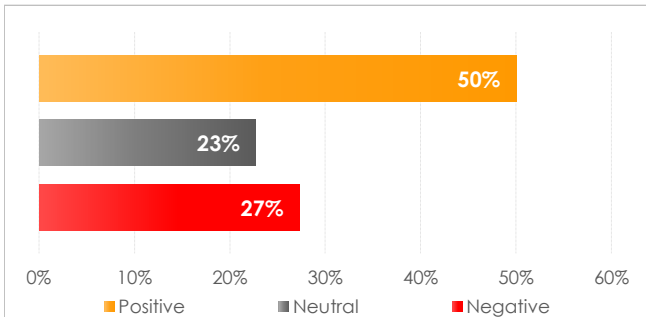
Social Capital Score



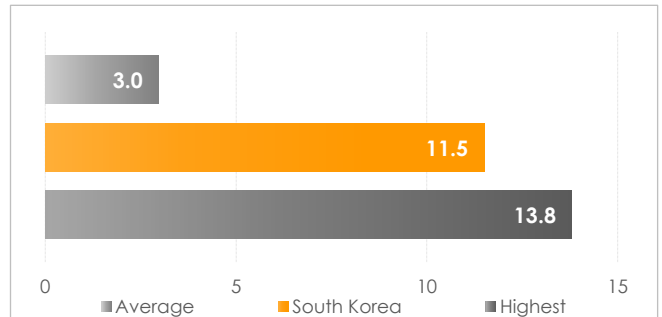
Indicator performance



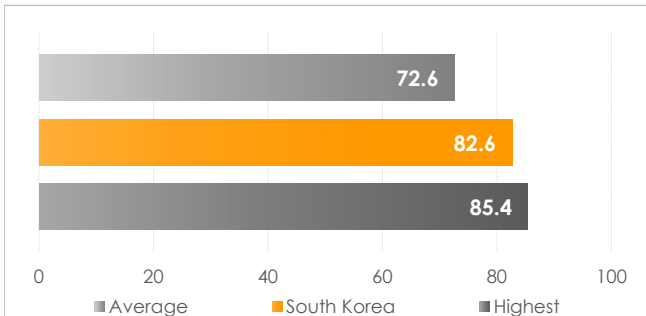
Indicator trends



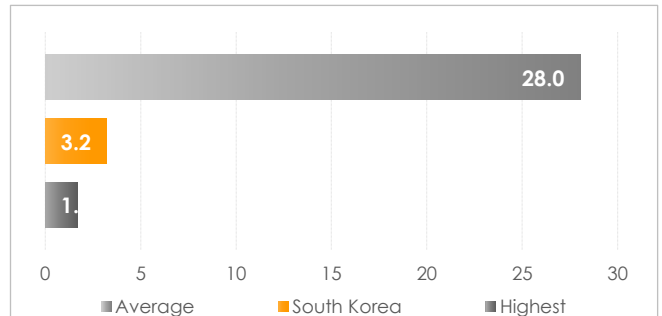
Hospital beds (per 100'000 people)



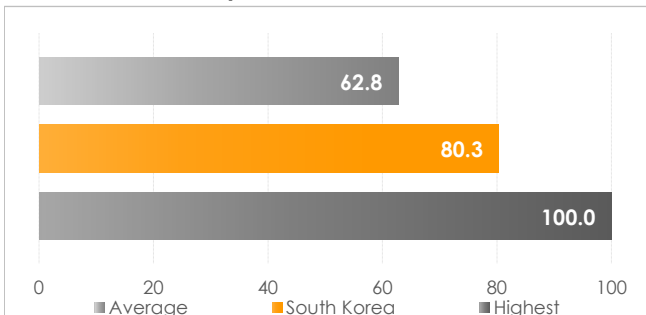
Life expectancy (years)



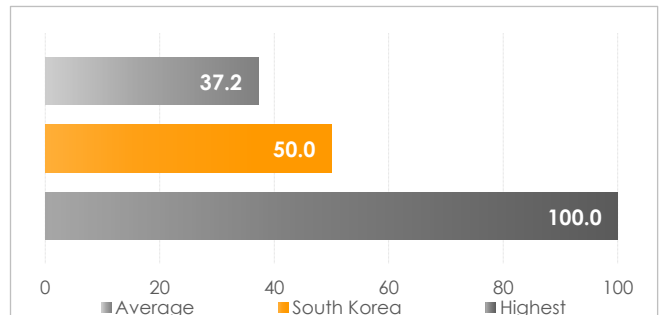
Child mortality (per 100'000 people)



Women with tertiary education



Press freedom



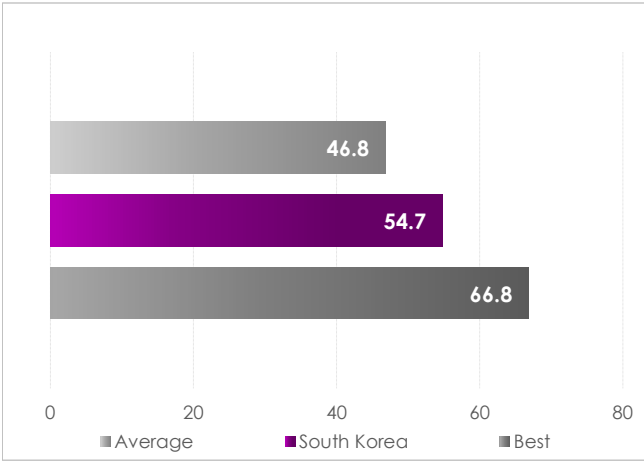


Governance

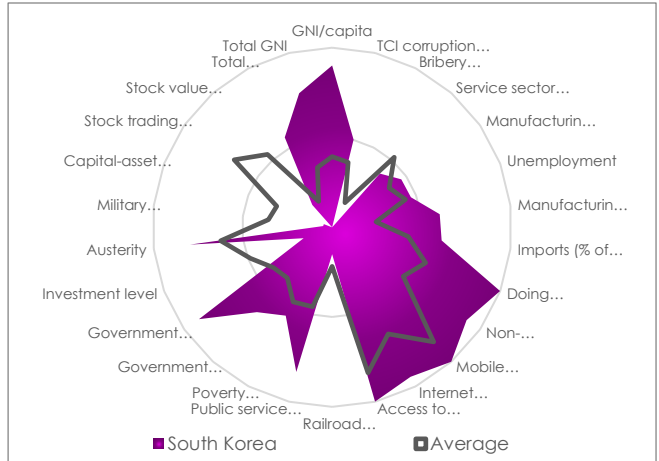
Governance measures the performance in core state areas – infrastructure, market and employment structure, corruption, resource allocation

<b>Score</b>	<b>49.2</b>	Positive trends	60.9%
<b>Rank</b>	<b>39</b>	Negative trends	26.1%

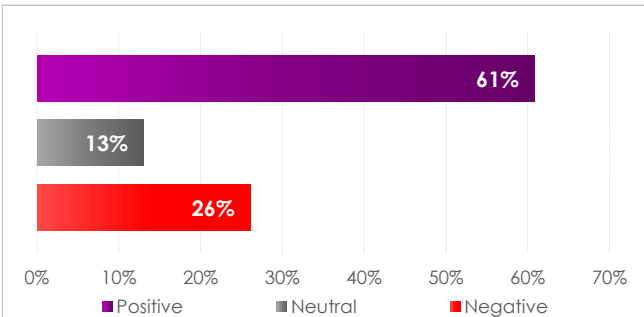
Governance Score



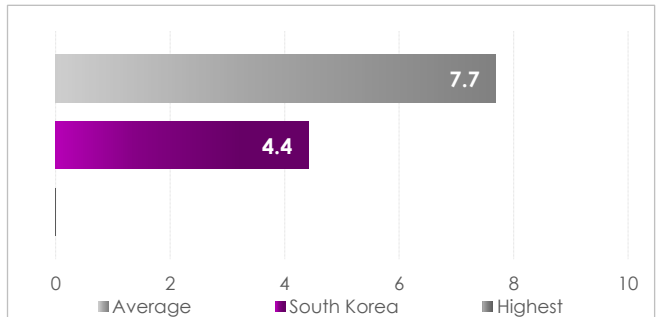
Indicator performance



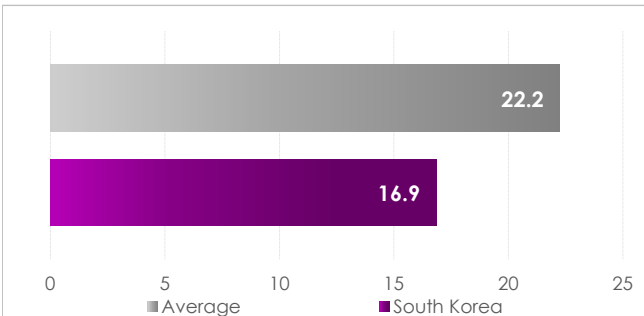
Indicator trends



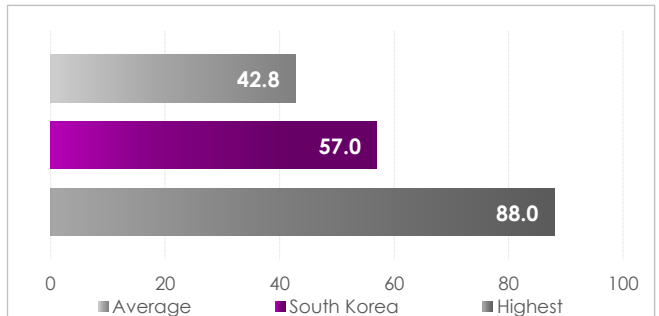
Government debt service (% of GNI)



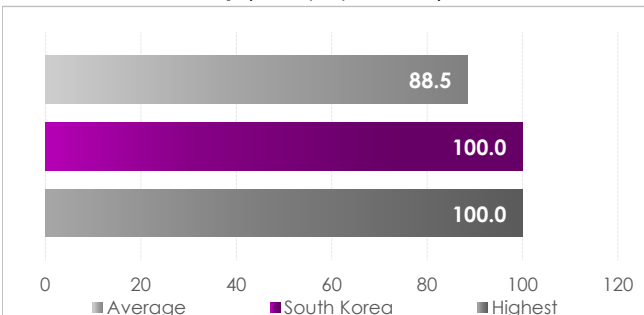
Investment level (% of GNI)



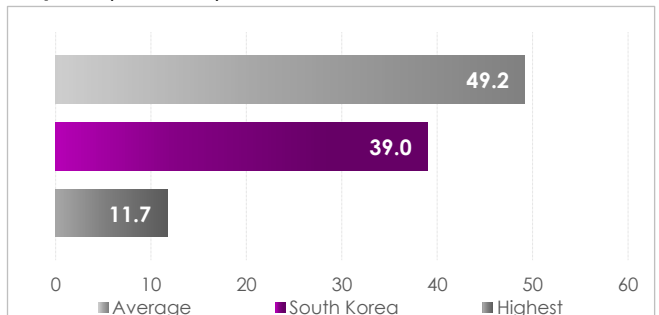
Corruption index



Mobile connectivity (% of population)



Imports (% of GNI)



**Use of information**

This information has been collected, aggregated and computed by SolAbility.

You are free and welcome to use, share and reproduce this information for non-commercial purposes with citation of source.

© SolAbility. All content published under the Creative Commons Attribution-Non-commercial-Share-Alike 4.0 International License

**Disclaimer**

No warranty

This publication is derived from sources believed to be accurate and reliable, but neither its accuracy nor completeness is guaranteed. The material and information in this publication are provided "as is" and without warranties of any kind, either expressed or implied. SolAbility disclaims all warranties, expressed or implied, including, but not limited to, implied warranties of merchantability and fitness for a particular purpose. Any opinions and views in this publication reflect the current judgment of the authors and may change without notice. It is each reader's responsibility to evaluate the accuracy, completeness and usefulness of any opinions, advice, services or other information provided in this publication.

Limitation of liability

All information contained in this publication is distributed with the understanding that the authors, publishers and distributors are not rendering legal, accounting or other professional advice or opinions on specific facts or matters and accordingly assume no liability whatsoever in connection with its use. In no event shall SolAbility be liable for any direct, indirect, special, incidental or consequential damages arising out of the use of any opinion or information expressly or implicitly contained in this publication.

Copyright

Unless otherwise noted, text, images and layout of this publication are the exclusive property of SolAbility. Republication is welcome.

No Offer

The information and opinions contained in this publication constitutes neither a solicitation, nor a recommendation, nor an offer to buy or sell investment instruments or other services, or to engage in any other kind of transaction. The information described in this publication is not directed to persons in any jurisdiction where the provision of such information would run counter to local laws and regulation.

**About**

SolAbility is a Korean-Swiss joint venture founded in 2005. SolAbility an independent sustainability think-tank and advisory with a fairly successful history in management consulting.

For more information, please visit [www.solability.com](http://www.solability.com)



[www.solability.com](http://www.solability.com)

[contact@solability.com](mailto:contact@solability.com)